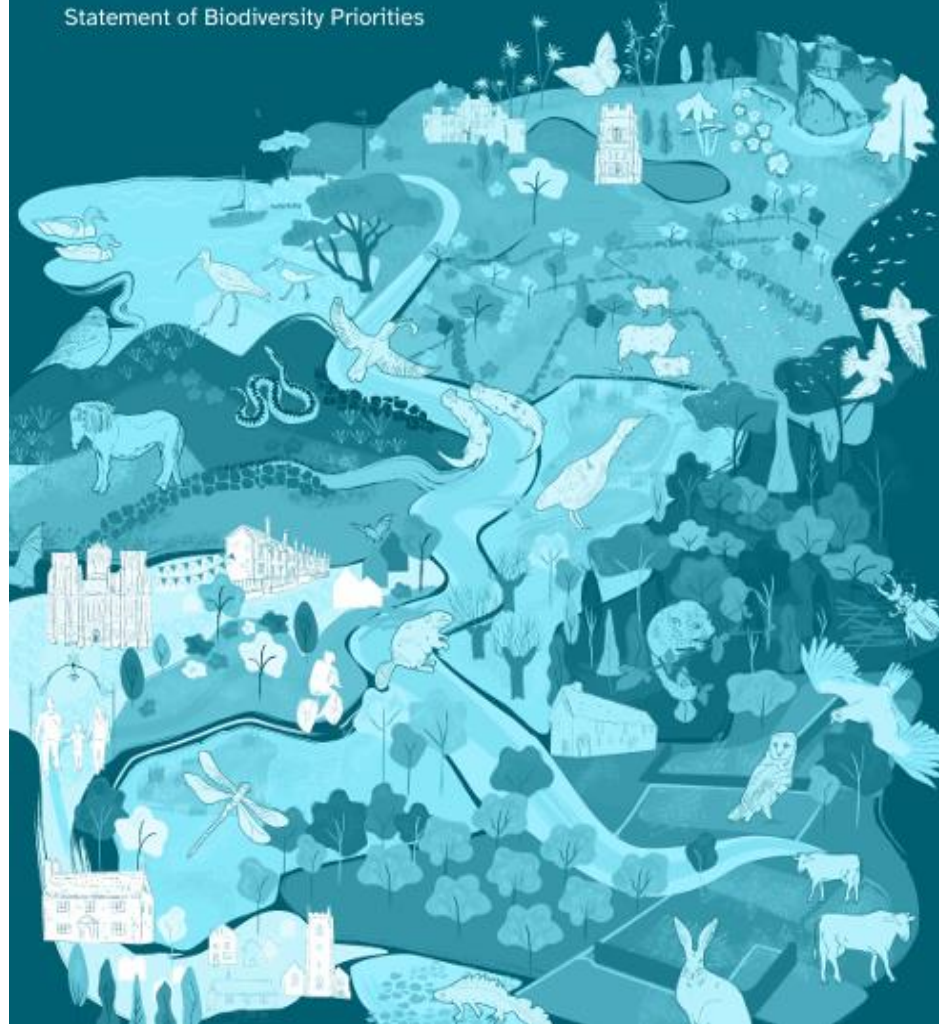




A Vision for Somerset Local Nature Recovery Strategy

Statement of Biodiversity Priorities



Steve Dury, Somerset Council

Purpose of LNRS

- **New statutory system of spatial strategies for nature's recovery**
- **Help reverse an ongoing decline of nature and biodiversity in England.**
- **Provides a clear, place-based plan for restoring and protecting nature in a way that supports both people and the environment**
- **Target resources effectively**



Lawton review 2010. “We need to make our network of sites bigger, better, and more joined up.”

PRINCIPLES UNDERPINNING A LOCAL NATURE RECOVERY STRATEGY



What will the LNRS do (and not do)?



What will the LNRS do? (1/2)

- **Set local priorities** 🌸 - deciding together which actions will make the biggest difference, whether that's planting trees, restoring wetlands, creating wildflower areas, or improving rivers.
- **Map important places for nature** 🌳 - showing which habitats and species are most valuable locally, and where there are opportunities to restore or connect them.
- **Guide funding and projects** 🏠 - helping farmers, landowners, councils, and community groups access support and investment for nature-friendly work.



What will the LNRS do? (2/2)

- **Join up efforts** 📍 - creating a more connected “nature recovery network,” so wildlife can move more freely between habitats.
- **Support people and place** 😊 - making green spaces healthier, safer, and more enjoyable, while reducing flooding, cleaning the air, and supporting wellbeing.
- **Shape development** 🏠 - ensuring new housing and infrastructure projects contribute positively to local nature rather than harm it.

👉 In short, an LNRS turns the big idea of “restoring nature” into a clear, practical roadmap for action **in your community, for your landscapes, and for future generations.**



An LNRS does not:

- ✗ **Create new legal designations or protections**
- ✗ **Impose duties directly on landowners or developers**
– it guides rather than compels.
- ✗ **Automatically secure funding** – it can influence where funding should go, but it doesn't guarantee investment by itself.
- ✗ **Replace existing planning or environmental policies**
– it is meant to complement local plans, BNG requirements, and protected site management.
- ✗ **Dictate land management** – landowners are not forced to manage land in a certain way, though the strategy can encourage voluntary action.



An aerial photograph of a village nestled in a valley. The village features a prominent church with a tall spire. The surrounding landscape is lush and green, with rolling hills and fields. The text is overlaid on a semi-transparent white box in the center of the image.

A Local Nature Recovery Strategy matters for communities because it:

- **Protects local identity and beauty**

Each place has its own woods, rivers, parks, and landscapes that make it special. An LNRS helps keep those unique features healthy for future generations.

- **Improves everyday life**

Cleaner rivers, more trees, and richer green spaces mean better air quality, less flooding, and places to walk, play, and relax.

- **Supports health and wellbeing**

Access to nature is proven to reduce stress, boost mental health, and encourage active lifestyles.



A Local Nature Recovery Strategy matters for communities because it:

- **Brings people together**

LNRs encourage collaboration – neighbours, schools, farmers, local groups – all working on shared projects like planting, restoring habitats, or managing community greenspaces.

- **Strengthens local economy**

A healthy environment attracts visitors, supports farming and food production, and makes the area more attractive to live and work in.

- **Gives communities a say**

Instead of decisions being made far away, LNRs make sure local voices help shape how nature is cared for in their area.



What is in the Somerset LNRS?

What forms the Somerset LNRS?

The LNRS is formed of two parts:

- The **Statement of Biodiversity Priorities**
- The **Local Habitat Map**

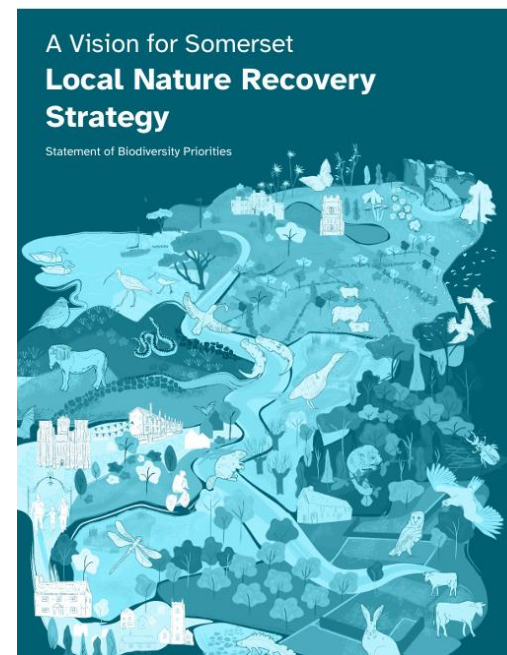
The habitats, priorities, and potential measures in the document identify what we want to do.

The potential measures are then presented on the map, showing where these would deliver the greatest benefit.



Statement of Biodiversity Priorities

- Identifies and describes the **key habitats and species** within Somerset.
- Identifies the **pressures and threats** to nature in Somerset.
- Identifies **opportunities** for nature recovery and the wider benefits from these.
- Identifies **‘priorities’** and **‘potential measures’** for nature recovery, taking into account wider benefits and nature-based solutions.

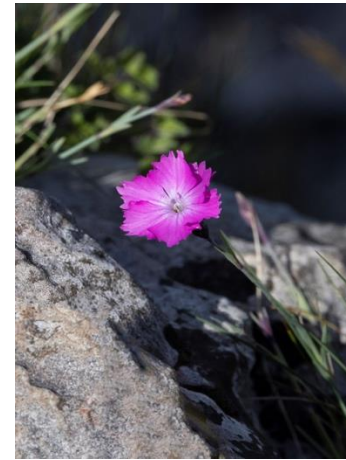


The **priorities** are what we see as being the most important things to achieve in order to deliver nature recovery.

The **measures** are the actions that if taken, would help to deliver the priorities of the LNRS

Species

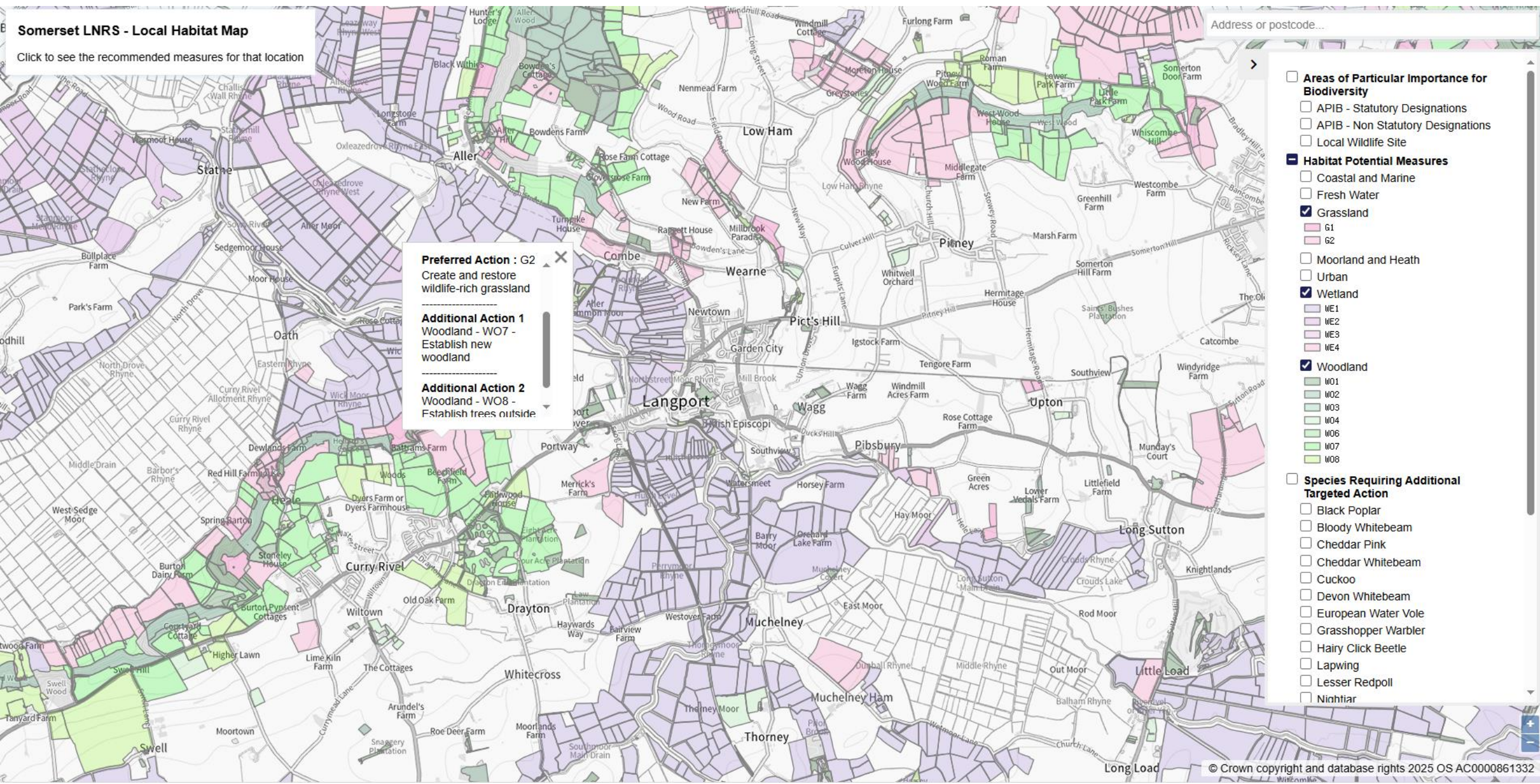
- Most species will markedly benefit from the LNRS in general
- Measures for species recovery are embedded within the relevant habitat sections of the Statement of Biodiversity Priorities
- **136 priority species** identified from a long list of 396 species assessed as rare, threatened or significant within the county.
- From this, **15 individual species and 8 species assemblages** were identified that require bespoke actions



Somerset LNRS - Local Habitat Map

Click to see the recommended measures for that location

Address or postcode...



Preferred Action : G2
Create and restore wildlife-rich grassland

Additional Action 1
Woodland - WO7 - Establish new woodland

Additional Action 2
Woodland - WO8 - Establish trees outside

- Areas of Particular Importance for Biodiversity**
 - APIB - Statutory Designations
 - APIB - Non Statutory Designations
 - Local Wildlife Site
- Habitat Potential Measures**
 - Coastal and Marine
 - Fresh Water
 - Grassland
 - G1
 - G2
 - Moorland and Heath
 - Urban
 - Wetland
 - WE1
 - WE2
 - WE3
 - WE4
 - Woodland
 - WO1
 - WO2
 - WO3
 - WO4
 - WO6
 - WO7
 - WO8
- Species Requiring Additional Targeted Action**
 - Black Poplar
 - Bloody Whitebeam
 - Cheddar Pink
 - Cheddar Whitebeam
 - Cuckoo
 - Devon Whitebeam
 - European Water Vole
 - Grasshopper Warbler
 - Hairy Click Beetle
 - Lapwing
 - Lesser Redpoll
 - Nighthawk

Working Together

Everyone has their part to play in helping nature to recover and reverse the loss of biodiversity.

In this chapter, you'll discover ways to help nature recovery in Somerset. It includes guidance tailored for various users on effectively implementing the strategy, along with case studies that showcase inspiring stories of nature recovery in action.



Individuals, Community Groups and Businesses

How to use this strategy

Individuals and community groups

Everyone can contribute to nature's recovery. As an individual or member of your community take time to find out more about your local greenspaces and the challenges to people and nature in your area. Explore our Opportunity Maps to see what nature recovery options might best suit your area and read through our case studies to see what inspires you.

Residents, schools, and local groups can use LNRS to support applications for funding and grants for tree planting, habitat restoration, or nature-based activities. Communities can use LNRS to advocate for nature-friendly development in planning applications and ensure biodiversity is considered in new housing or infrastructure projects. It strengthens community campaigns to protect vital wildlife corridors and greenbelt land. It can inspire local schools and groups to participate in wildlife monitoring (e.g. bird counts, wildflower surveys) to track biodiversity changes over time.

Speak to your local Councillor to ask them to support your ideas. There is additional support and funding available from a range of sources and you can use our nature recovery principles to shape the design of your project.

Businesses

Nature is 'critical infrastructure' for the economy. Nature loss presents systemic risks to businesses and the financial system, from disrupted supply chains to diminished economic growth. In contrast, investing in nature recovery offers significant opportunities in sustainability-linked markets and nature-based solutions

Taking action on nature can deliver multiple business benefits, but certainty and clarity are needed to drive investment at scale. The LNRS

can give businesses confidence on what actions to take for nature recovery and nature-based climate change adaptation and mitigation, where and how.

The LNRS will play an important role in bringing green investment into the county from national and international funding sources, and creating local opportunities for Somerset businesses to achieve their environment and social governance (ESG) objectives

For individuals, community groups and businesses this Strategy can be used to:

- Explore our opportunity maps to identify what opportunities there are in your community for nature recovery. The maps are a starting guide so use them to generate ideas.
- Assess your community spaces to understand which opportunities will work best for your land. Evaluate what opportunities you have and if you need any more information or permissions to deliver for nature recovery
- Decide what projects you want to pursue and explore funding opportunities such as the Climate and Nature Fund. Think about what you need to deliver your project or actions and align your priorities with the right funding.
- Develop an action plan for nature recovery, think about what works for your community and what's feasible to deliver. Take guidance from our nature recovery principles and consider the short and long-term, and how you could monitor positive impacts
- Help set up or join an existing local community nature recovery group, friends of or voluntary group working to manage local greenspaces for the benefit of both wildlife and people.
- Align business operations with nature recovery priorities where possible.



Town and Parish Councils

How to use this strategy

To tackle the ecological emergency and reach 30 by 30, we need everyone, at every level of society, to be taking action. In addition to local community groups and residents, Parish and town councils will know their area best, and the this strategy helps enable them to take action for nature.

Parish and town councils can use this Strategy to support sustainable local development, protect biodiversity, and enhance green spaces for the benefit of residents. It can be used to shape the positive management of their local green spaces for nature and people, along with helping to inform environmental and land use policies and Neighbourhood Development Plans.

The Strategy can help Public bodies, including Town & Parish Councils, who now have an enhanced duty (The Environment Act 2021) to 'maintain and enhance' biodiversity, rather than just 'conserve' biodiversity. The new extended duty requires public authorities to include the enhancement of biodiversity alongside conservation by way of creating 'the general biodiversity objective'.

A Parish or Town Council may wish to consider creating a Local Nature Action Plan (LNAP), informed by this strategy. This is simply a way for parish and town councils to plan the action they will take to help nature in their area. They are intended to help parish and town councils identify their existing assets for nature and opportunities for restoring nature in their area. Opportunities may exist on land they own and arise through engaging with residents and communities, businesses and local landholders. The concept first developed by South Gloucestershire Council. For examples of completed plans by parish and town councils, visit **South Gloucestershire Council Local Nature Action Plans**.

For Town and Parish Councils, the LNRS:

- Aids in developing Local Nature Action Plans (LNAPs): Councils can create tailored action plans that align with the broader LNRS objectives.
- Aids in Implementing Biodiversity-Friendly Practices: Councils can adopt practices on land they manage such as creating wildflower meadows, planting hedgerows, community orchards, and establishing community composting sites.
- Aids in shaping local planning and development. Councils can include biodiversity considerations in their comments on planning applications, ensuring that development proposals minimize harm to biodiversity and contribute to nature recovery.
- Helps in Applying for Funding and Grants for environmental projects, such as tree planting, pond restoration, and hedgerow creation.
- Helps support Climate Resilience and Flood Prevention. Councils can use LNRS to implement nature-based solutions to climate challenges, such as tree planting for carbon sequestration and shade, and Restoring wetlands and planting hedgerows to reduce flooding and soil erosion.
- Helps in engaging the Community in Environmental Stewardship: LNRS can help councils raise awareness and involve residents in environmental initiatives, such as educational workshops, wildlife surveys, and conservation projects, fostering a sense of ownership and collective responsibility for local natural resources

Frome Town Council

Case Studies



Frome Town Council declared an ecological emergency in 2021, and has launched a number of initiatives, including: the Frome Community Wildlife Mapping Project, which encourages people to connect with nature while also generating valuable ecological data; the Pocket Meadows Project (see below); and the Wild About Trees project, a community-led tree planting initiative to showcase the Council's commitment to planting trees and hedgerows while also encouraging the community to engage with the green space and woodland areas in the town.

The Pocket Meadows Project is about turning small areas of Frome Town Council's owned spaces like roadside verges, community greens and private gardens into vibrant wildflower meadows that support bees, butterflies and other pollinators.

Launched in 2025, the project is a collaboration between the Community Interest Company Meadow in My Garden, who generously offered free seeds, Frome Town Council, and Frome Wild Bunch. The focus is on giving people seeds and guidance to create and look after their own mini meadows in spaces managed by the town council, and in private gardens.

As part of this pilot project approximately 900msq worth of Pocket Meadows have been planted in spring 2025.

Looking ahead, the plan is to expand the project further and include native bulb planting involving local schools and the wider community.

Thanks to Frome's commitment to boosting insect populations through habitat creation, pollinator-friendly planting, and a no-pesticide policy, the town has been recognised as a 'Bee Friendly Town' by the Bee Friendly Trust.



For Town and Parish Councils, the LNRS:

- **Aids in developing Local Nature Action Plans (LNAPs):** Councils can create tailored action plans that align with the broader LNRS objectives.
- **Aids in Implementing Biodiversity-Friendly Practices:** Councils can adopt practices on land they manage such as creating wildflower meadows, planting hedgerows, community orchards, and establishing community composting sites.
- **Aids in shaping local planning and development.** Councils can include biodiversity considerations in their comments on planning applications, ensuring that development proposals minimize harm to biodiversity and contribute to nature recovery.

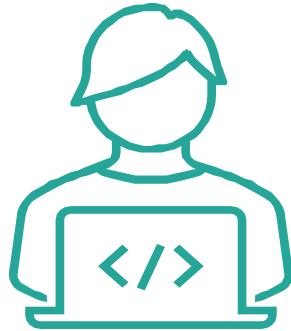


For Town and Parish Councils, the LNRS:

- **Helps in Applying for Funding and Grants** for environmental projects, such as tree planting, pond restoration, and hedgerow creation.
- **Helps support Climate Resilience and Flood Prevention.** Councils can use LNRS to implement nature-based solutions to climate challenges,
- **Helps in engaging the Community in Environmental Stewardship:** LNRS can help councils raise awareness and involve residents in environmental initiatives, such as educational workshops, wildlife surveys, and conservation projects



Public Consultation



Scan the QR code to take part in the survey or find out more at:

www.somerset.gov.uk/somersets-nature-recovery-strategy-consultation



Somerset's wildlife needs you

Somerset Council has launched a public consultation on the county's first Local Nature Recovery Strategy (LNRS).

This draft strategy sets out priorities for nature's recovery, maps Somerset's most valuable areas for wildlife, and identifies opportunities to improve habitats and deliver wider environmental benefits such as cleaner air, flood resilience and access to green spaces.

Take part in our consultation to help shape the strategy:



Scan the QR code to take part in the survey or find out more at:

www.somerset.gov.uk/somersets-nature-recovery-strategy-consultation

Consultation closes 31 October



Post Consultation

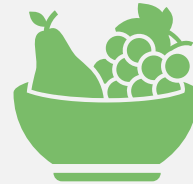
- **Reviewing Your Feedback**
- **Expert Panel:** Technical specialists in Nature Recovery and our Steering Group members will help assess responses.
- **Scoring Matrix:** Responses evaluated against:
 - Alignment with LNRS strategic and legal objectives.
 - Consistency with evidence used to develop the draft LNRS.
- **Outcome:** A consultation response will be published on the LNRS website with the final LNRS publication expected in early 2026.



LYNG PARISH COUNCIL – COMMUNITY GARDEN PROJECT



Progress update on village hall
community garden project



Project outcomes include paths,
raised beds, vegetable patch,
fruit trees, and future
workshops



Community-led initiative with
wide volunteer involvement

IN THE BEGINNING



OUTCOME 1: ACCESSIBLE PATHS

Eco-friendly 'hoggin' path chosen after community consultation

Local businesses supported materials & equipment

Volunteers (ages 12–86) built the path over 5 days

Improved access for wheelchair users and elders



FOUNDATION FOR
ACCESABLE PATH



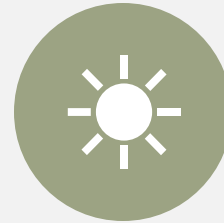
OUTCOME 2: RAISED BEDS



LANDSCAPE GARDENER
DESIGNED
PROFESSIONAL PLAN



VOLUNTEERS BUILT
AND FILLED TWO
LARGE WOODEN
PLANTERS



PLANTERS POSITIONED
FOR ACCESSIBILITY AND
SUNLIGHT



THIRD RAISED PLANTER
FOR CHAIR-BASED
GARDENING



PLANTERS AND RAISED BEDS

OUTCOME 3 & 4: VEGETABLE PATCH & FRUIT TREES



COMMUNITY DONATED
SEEDS/PLANTS;
PERMACULTURE
WORKSHOP HELD



STUDENTS WITH
LEARNING DIFFICULTIES
PLANTED SUNFLOWERS



EXISTING FRUIT TREES
PRUNED AND
NOURISHED



NEW FRUIT TREE
PLANTING PLANNED
FOR AUTUMN WITH
WASSAILING EVENT



FRUIT OF OUR LABOUR



OUTCOME 5: FUTURE WORKSHOPS



Regular workshops continue with positive feedback



Upcoming activities: garden care, harvesting, bird boxes, jam making



Paving, willow weaving, and permaculture talks planned



Strong ongoing community engagement



TOMS BOYS



PROJECT RESULT IN ACTION



THANK YOU TO ALL INVOLVED



Our Community Garden



West Monkton Parish Council

Background

- The location
- The idea

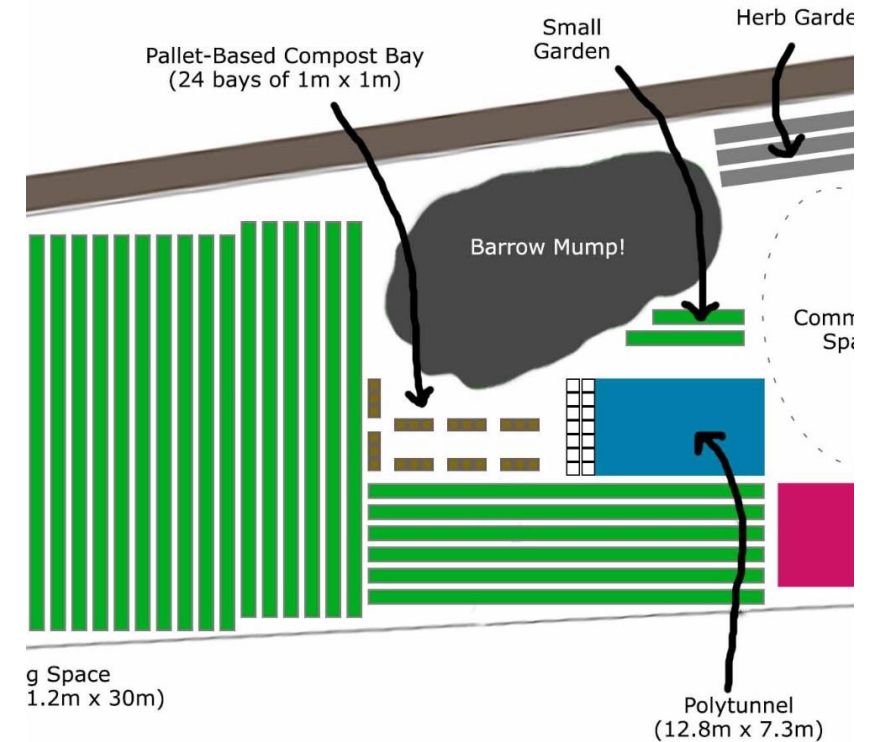




How Our Community Garden started

Process of Applying for the Grant

- Studied the grant criteria
- Does the project meet the criteria? Could it?
- We looked at ways in which the garden would fulfil the criteria for example, working with the school and using the garden to help children learn about growing and community; providing a well-being area; making it possible for families who don't have access to outdoor space to use the area.
- Organised meeting with the volunteers involved in the project to brainstorm ideas and map out a vision for the garden
- Made a list of what was needed for the project.



Our Grant Application

- Application submitted in 2023. Items included:
 - A garden shed
 - Picnic benches
 - A boards
 - Pots and seed trays
 - Grass cutting equipment
 - Tools

£2500 of grant funding received from SALC



What's been achieved with the Grant Funding



What's been achieved with the grant funding



What's been achieved with the grant funding

The difference the project has made in our Community

Increased levels of volunteering.

Increased levels of physical activity.

Education, knowledge and skills for all ages

Reduced food poverty

Increased sense of community

Reduced loneliness

Improved local environment / nature



**Any
Questions?**



West Monkton Parish Council



STEP, RIDE THRIVE

ACTIVE TRAVEL PROJECT



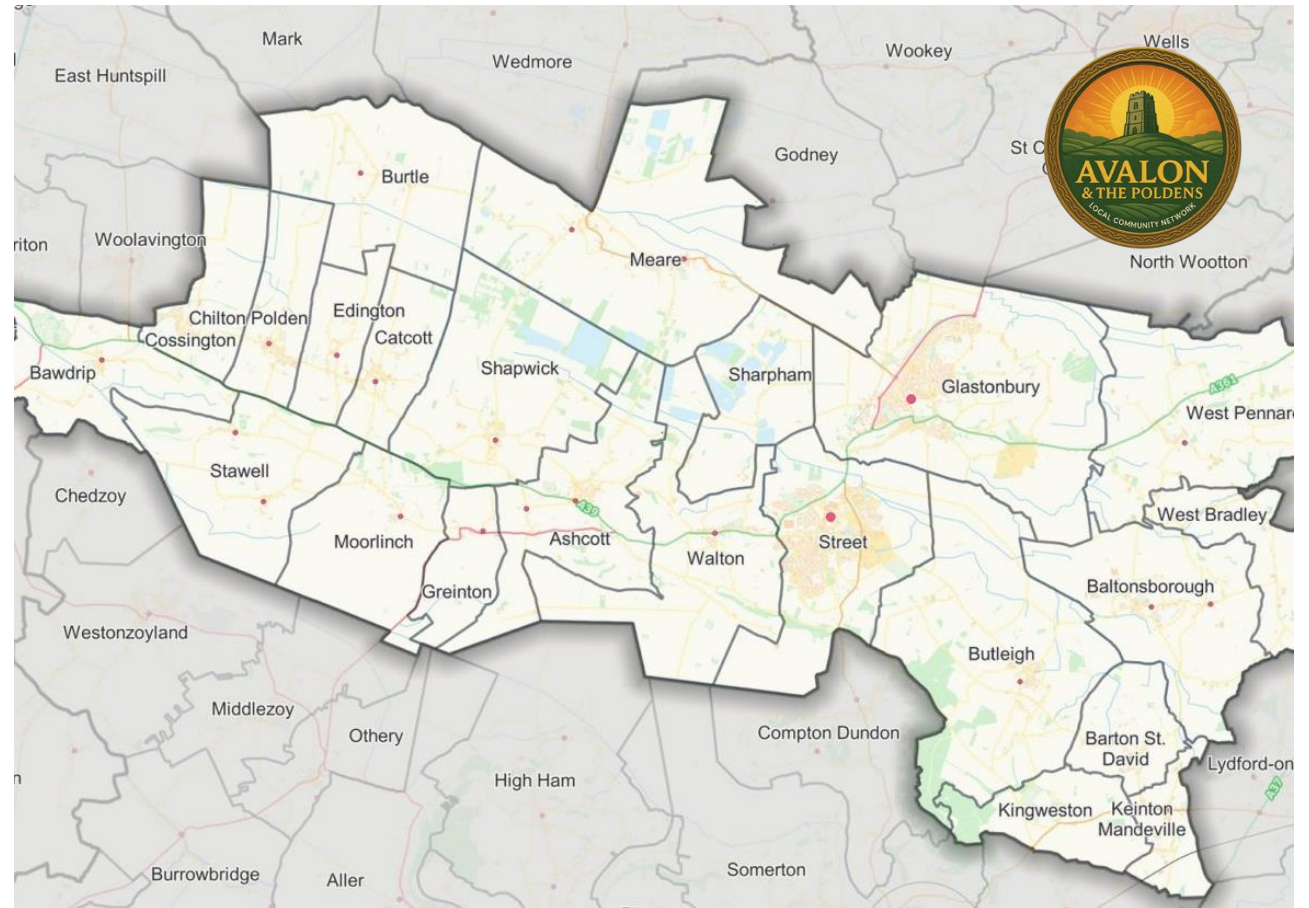
Buses: A pilot extension of the #668 bus route to include a new stop at the Avalon Marshes Centre.



Bikes: Working with local charity On Your Bike, the project will offer 15 free “Dr Bike” community events and 15 school bike maintenance workshops.



Walking: A programme of guided walks, wellbeing days, and downloadable route guides to support green social prescribing initiatives.





Thank you for your time!

Visit the project website to find out more:

www.stepridethrive.wordpress.com

Contact the LCN if you'd like to learn more or get involved:

avalonandpoldenslcn@somerset.gov.uk

Or email Natalie Watson, Avalon Marshes Business Manager:

natalie.watson@naturalengland.org.uk

